



# USLS-LSLC

**University of St. La Salle**

**Language Skills Learning Center**



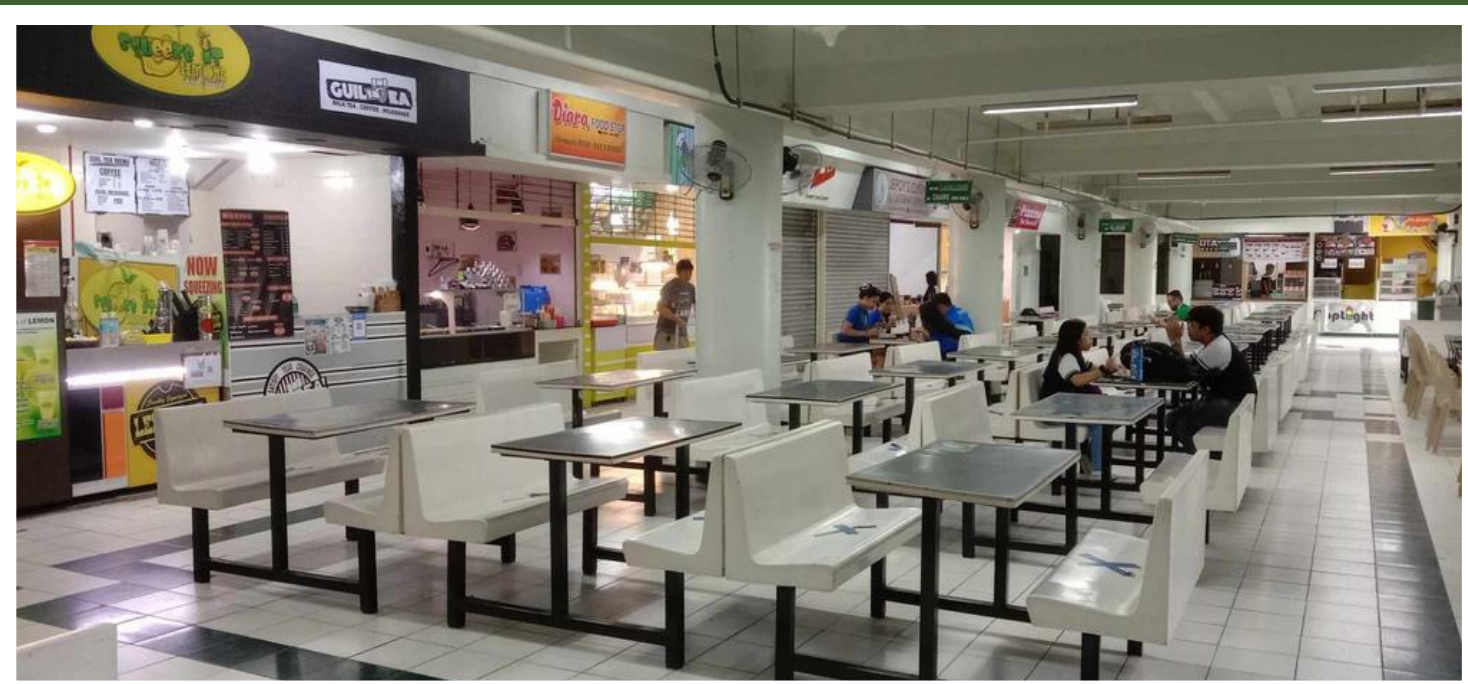
# UNIVERSITY OF ST. LA SALLE BACOLOD

# BRIEF HISTORY

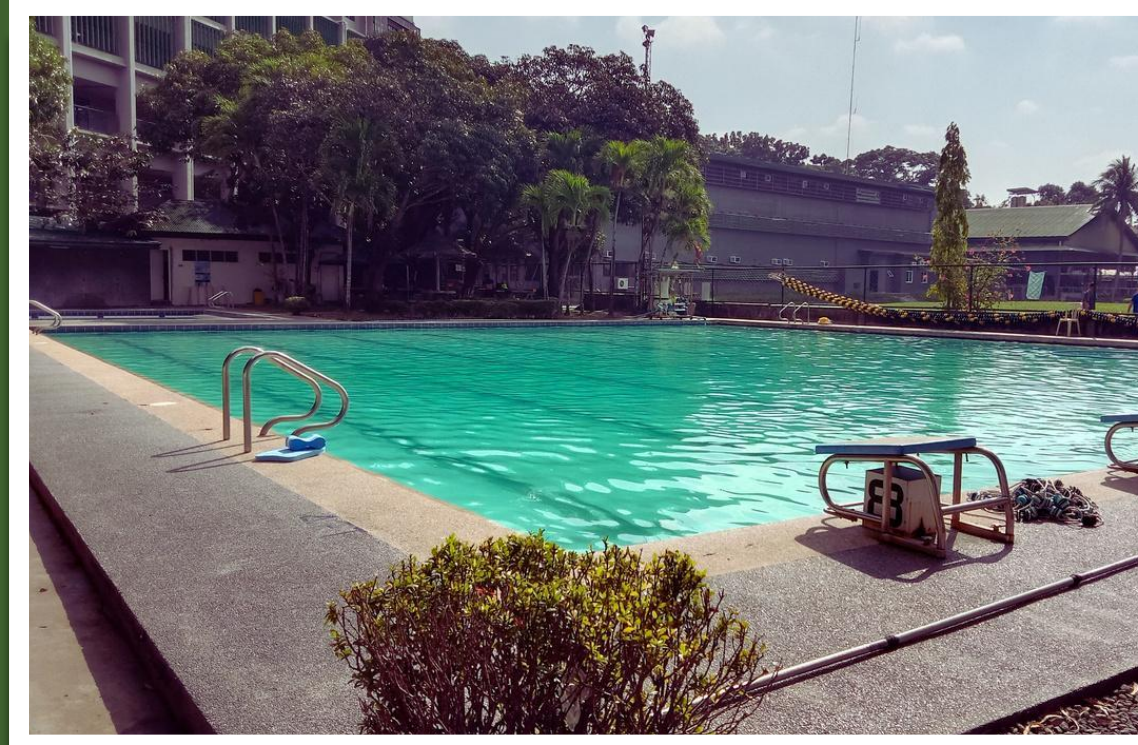
Established in 1952, University of St. La Salle -  
Bacolod is a Catholic institution in Negros  
Occidental, Philippines.



# FACILITIES



# SPORTS FACILITIES



# CAMPUS LIFE



# LANGUAGE SKILLS LEARNING CENTER

LSLC

The image shows the exterior of a modern, light blue building with a large glass entrance. In the foreground, four large, colorful 3D letters spell out 'LSLC'. The 'L' is orange, the 'S' is brown, the 'L' is teal, and the 'C' is blue. The building is surrounded by lush greenery, including palm trees and other tropical plants. The sky is overcast.

# COURSES





# TIMETABLE

Time	Regular Course		Intensive Course	
08:00-08:50	Reading	1:1	Reading	1:1
09:00-09:50	Writing	1:1	Writing	1:1
10:00-10:50	Speaking	1:1	Speaking	1:1
11:00-11:50	Listening	1:1	Listening	1:1
13:00-13:50			Speaking	1:1
14:00-14:50	Effective Communication	Group	Effective Communication	Group
15:00-15:50	Dictation	Group	Dictation	Group
16:00-16:50				
17:00-17:50	Option	Group	Option	Group
19:00-19:50	Option	Group	Option	Group

# CURRICULUM

(ESL)

CLASS	SUBJECT		TEST
1:1	1:1 4 hours	1:1 5 hours	Level
	Reading, Writing, Listening, Speaking		
GROUP	Grammar, Culture Shock, Dating, Hobbies, Personal Background, Lifestyle, Presentation, Job Interview, Role-Playing		Monthly
OPTION	17:00 - 18:00	TOEIC, Discussion	TOEIC and Interview
	19:00 - 20:00	Vocabulary, CNN	

# CURRICULUM

## (IELTS)

LEVEL	TARGET STUDENTS	GOALS
Beginner	Students who are new to IELTS or have a low score	To achieve a score of 5.0 on the IELTS exam
Intermediate	Students who have a basic understanding of IELTS and want to improve their score	To achieve a score of 6.0 on the IELTS exam
Advanced	Students who have a high score on IELTS and want to improve their performance further	To achieve a score of 7.0 or higher on the IELTS exam

# CURRICULUM

## (TOEIC)

LEVEL	TARGET STUDENTS	GOALS
Beginner	Students who are new to TOEIC or have a low score	To achieve a score of 600 on the TOEIC test
Intermediate	Students who have a basic understanding of TOEIC and want to improve their score	To achieve a score of 700 on the TOEIC test
Advanced	Students who have a high score on TOEIC and want to improve their performance further	To achieve a score of 800 or higher on the TOEIC test

# CURRICULUM

## (BUSINESS ENGLISH)

LEVEL	TARGET STUDENTS	GOALS
Beginner	Students who want to study basic business expressions, telephoning, writing emails, and writing resumes	To study basic business expressions, telephoning, writing e-mails, and writing resume; to acquire basic knowledge on international business environment.
Intermediate	Students who want to have an internship abroad; students who want to master their business English skills; students who have a goal to get a job at a foreign company or abroad; students who work with foreigners	To expose oneself in various business English situations, in preparation for the actual business environment; to be able to handle business meetings in English; to take business calls, attend business conferences, and write business letters and emails in the English language.
Advanced	Students who need to attend many business meetings and presentations; students who want to advance their business expressions; students who want to study business English for a specific industry or market	To enhance abilities in dealing with various international business environments; to be fluent and efficient in using the English language in business meetings, presentations, and others; to express one's opinion like a native English speaker.

# CURRICULUM

## (TOEFL)

LEVEL	TARGET STUDENTS	GOALS
Beginner	Students need to have TOEFL score, but lack the basic knowledge and skills.	To achieve a TOEFL iBT score of 60
Intermediate	Students want to study or get a job in America. Students want to have the highest TOEFL score. Students want to speak English fluently and enroll in English courses.	To achieve a TOEFL iBT score of 80
Advanced	Students need to achieve a TOEFL iBT score of 100-110. Students want to master speaking and writing parts. Students want to maximize the ability to solve TOEFL questions.	To achieve a TOEFL iBT score of 100-110

# Option Class

In addition to daily regular classes, LSLC offers a variety of optional lessons from Monday to Thursday for the interested English learners who wish to wisely spend their time right after their regular classes.

Schedule : Mon~Thu(5~6pm, 7~8pm, 7~10pm)  
Number of hours : 20 hours per week



## ● TOEIC LC, RC, Speaking

With an instructor, TOEIC LC, RC, and Speaking classes are intensively taught and discussed to benefit the students in preparation for the TOEIC test.



## ● VOCABULARY class (maximum 3 hours)

In this class, a vocabulary book is used to learn a set of vocabulary words, followed by individual self-study and completion of the final day-to-day test. In parallel with one-on-one regular classes, it can improve one's English level, in a short time.

## ● ACA & V class

American Culture Accent and Vocabulary - they are intensive concentration courses for students to listen to and learn pattern sentences that are applied in everyday life among conversations extracted from the US cultural contents.



## ● CNN class

This class is designed for students whose level is higher or lower than the upper level. It is a class where students can watch and listen to the latest global trends and current affairs through various CNN News, while learning popular and current English expressions.



## ● IELTS

This is a course for those students who need an academic/general qualifications in studying abroad, immigration, and employment. It focuses on the English proficiency and achievement of the target score.

## ● Discussion class

In the class, students can choose light issues or everyday topics and exchange views and opinions with each other. It is a class where students can explain some vocabulary words, express their thoughts, and persuade others.

# CURRICULUM

(SEMICAMP)

## Weekdays

- ❑ 1:1 class (4 hours)
- ❑ Group class (2 hours)
- ❑ Homework (1 hour)
- ❑ Review/test (1 hour)

## Weekends

- ❑ Recreational activities:
  - ❑ Mambukal Resort
  - ❑ Caribbean Water Park
  - ❑ Lakawon Island picnic
  - ❑ Watching movies
- ❑ Community service activities:
  - ❑ Orphanage visit
  - ❑ Mangrove planting
- ❑ Other activities:
  - ❑ Lagoon Park
  - ❑ Mall shopping



# TIMETABLE

## (SEMICAMP)

Time	Content	Weekend
07:00-08:00	Breakfast	
08:00-09:00	Self-Study	Weekend Activity
09:00-10:00	1:1 Speaking	
10:00-11:00	1:1 Reading	
11:00-12:00	1:1 Listening	
12:00-13:00	Lunch	
13:00-14:00	1:1 Writing	Weekend Activity
14:00-15:00	Group Class	
15:00-16:00		
16:00-17:00	Self Study	
17:00-18:00	Free Time	
18:00-19:00	Dinner	
19:00-20:00	Homework	Free Time
20:00-21:00	Review/Test	
21:00-22:00	Free Time	
22:00-23:00	Sleeping Time	

# CURRICULUM

## (PREMIUM CAMP)

- **8 hours of classes + activities**

- 1:1 class (4 hours)
- Group class (2 hours)
- Activities
- Homework (1 hour)
- Review/test (1 hour)

- **Weekly activities**

- Swimming/Golf/Badminton
- Visiting a local elementary school
- Visiting a museum/Bacolod City Hall
- Visiting a local home

- **Weekend activities**

- Mambukal Resort / CARIBBEAN Waterpark / Lakawon Island Resort day trip / Movies
- Volunteer programs: Visit an orphanage / Plant mangroves
- Department stores / Shopping malls / Lagoon Park

# CURRICULUM

## (PREMIUM CAMP)

Time	Content	Weekend
07:00-08:00	Breakfast	
08:00-09:00	Self-Study	Weekend Activity
09:00-10:00	1:1 Speaking	
10:00-11:00	1:1 Reading	
11:00-12:00	1:1 Listening	
12:00-13:00	Lunch	
13:00-14:00	1:1 Writing	Weekend Activity
14:00-15:00	Group Class	
15:00-16:00		
16:00-17:00	Swimming / Badminton / Visiting landmarks	
17:00-18:00		
18:00-19:00	Dinner	
19:00-20:00	Homework	Free Time
20:00-21:00	Review/Test	
21:00-22:00	Free Time	
22:00-23:00	Sleeping Time	

# INCLUSION

- Dormitory Fee (Triple Room)
- Registration Fee
- Airport Pick-up Fee
- SSP (Special Study Permit)
- Electricity and Water Bills
- Textbooks
- Visa
- Weekly/Weekend Activities

# EXCLUSION

- Flight Tickets
- Dormitory Deposit (\$50)
- Philippine immigration tax and notarization costs for children under 15 years old
- Additional Fee (if students want to study IELTS)



# CONNECTING CULTURES



# BUDDY PROGRAM



# LANGUAGE SHARING





**VOLUNTEER  
ACTIVITIES**





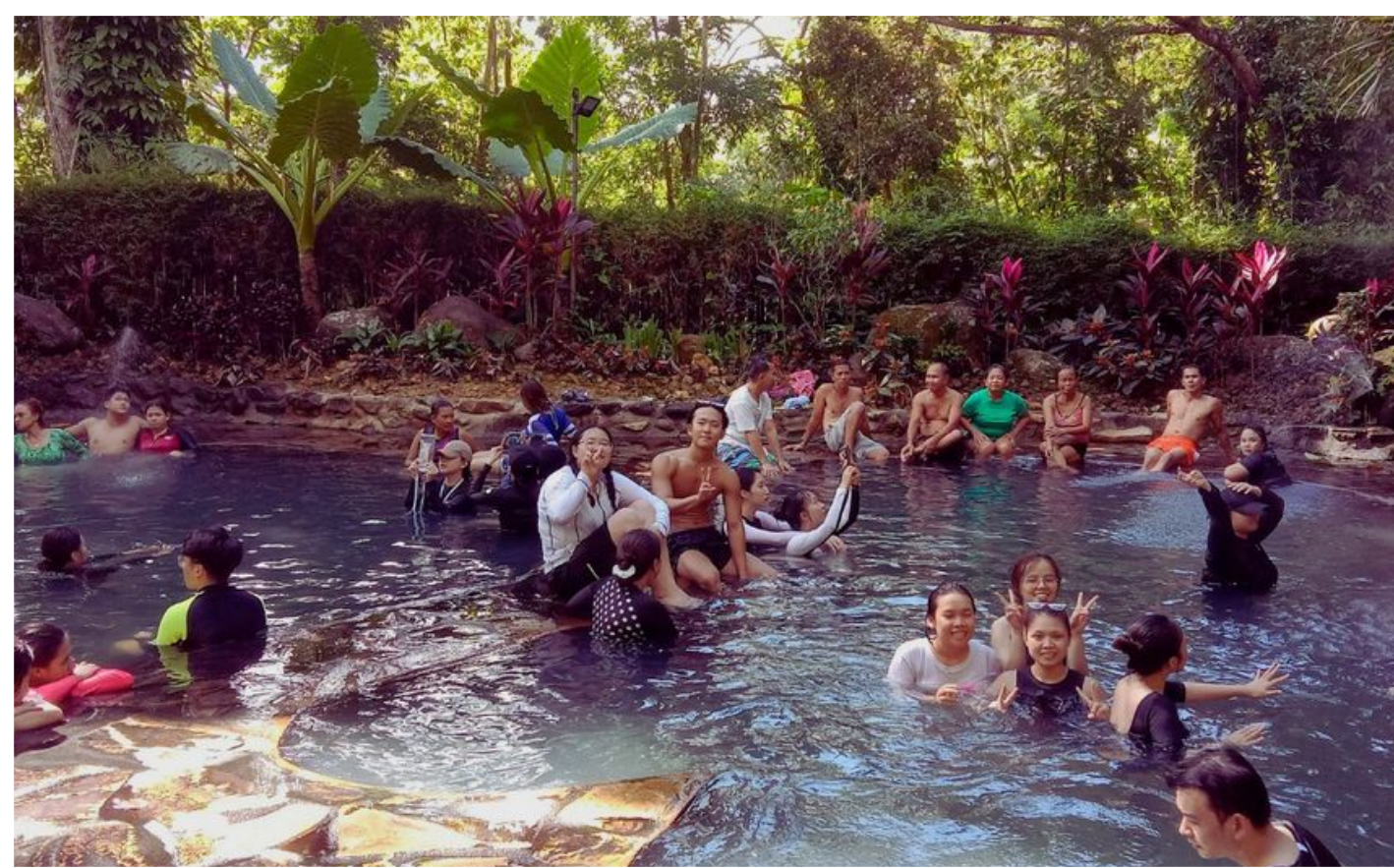
# MANGROVE PLANTING



**ORPHANAGE VISIT**

# TRAVEL & LEISURE



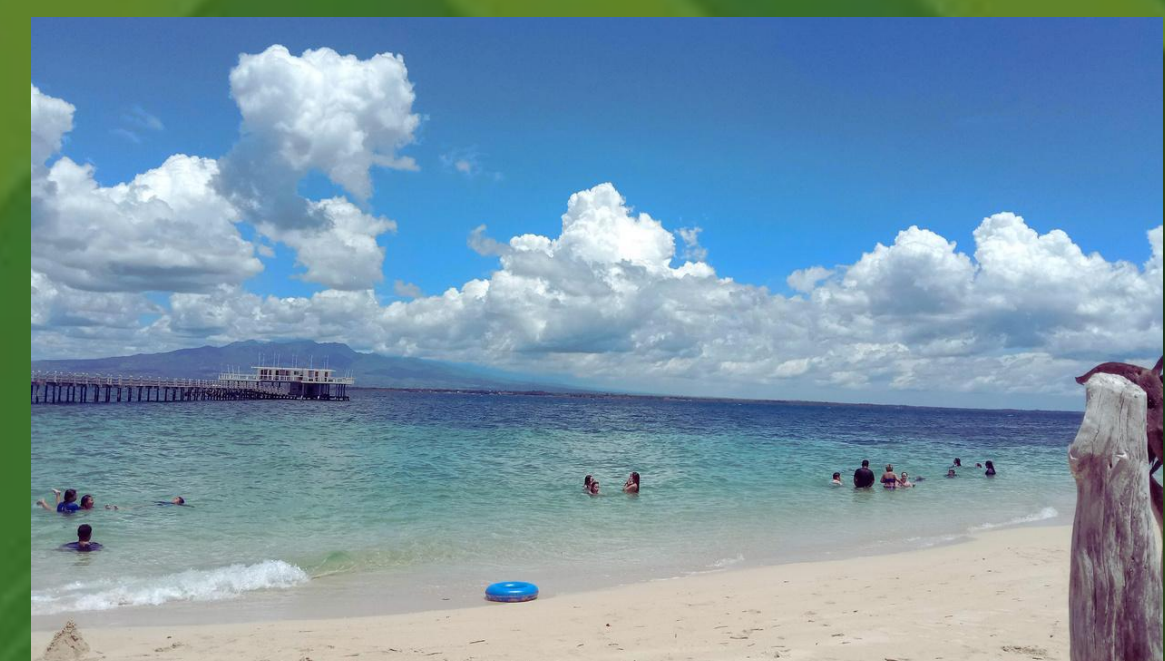


# MAMBUKAL MOUNTAIN RESORT



# BORACAY ISLAND





# LAKAWON ISLAND



# OSLOB WHALESHARK

# LSLC DORMITORY





# FEATURES and AMENITIES





# CAFETERIA



# RECREATIONAL FACILITIES



THANK

YOU